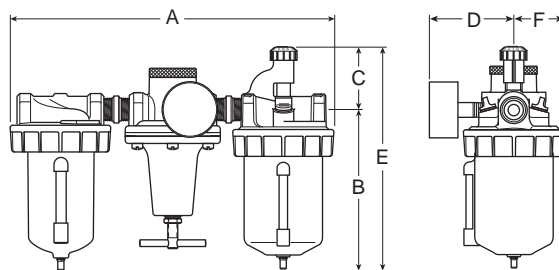
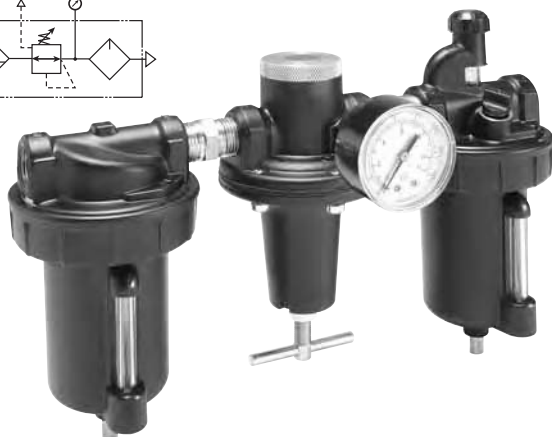
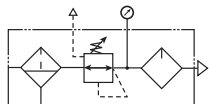


Standard Combinations – C628 Series

- See individual components for details.
- Gauges included on combinations.

Three-Unit Combo



Series	Port	Model Numbers
C628	3/4"	C628-06FRLWJCW
	1"	C628-08FRLWJCW
	1-1/4"	C628-10FRLWJCW
	1-1/2"	C628-12FRLWJCW

For other models, refer to ordering information below.

A	B	C	D	E	F
C628-06FRL, C628-08FRL					
15.75 (400)	7.75 (197)	5.25 (133)	3.52 (89)	13.00 (330)	2.48 (63)
C628-10FRL, C628-12FRL					
16.50 (419)	8.13 (206)	6.00 (152)	3.86 (98)	14.13 (359)	2.64 (67)

Inches (mm)

• All dimensions nominal.

Ordering Information

C	628	—	06	FRL	W	J	C	W	
----------	------------	----------	-----------	------------	----------	----------	----------	----------	--

Port Size
06 3/4 Inch
08 1 Inch
10 1-1/4 Inch
12 1-1/2 Inch

Filter Bowl Options
E 32 oz. Large Capacity wo/Sight Gauge
W 16 oz. Metal w/Sight Gauge

Elements
G 5 Micron
J 40 Micron

Regulator Reduced Pressure Range
C 0-125 PSIG
D 0-250 PSIG

Drains and Options
H Button Head Fill Fitting (Lubricator)
K Non-Relieving Regulator
Q External Heavy Duty Auto Drain (Filter)
R Internal Auto Drain (Filter)
X9 Manual Twist Drain on Lubricator (Increases Product Length by 9/16 Inch)

BOLD ITEMS ARE MOST POPULAR.

Lubricator Bowl Options
E 32 oz. Large Capacity wo/Sight Gauge
W 16 oz. Metal w/Sight Gauge

CAUTION:

REGULATOR PRESSURE ADJUSTMENT – The working range of knob adjustment is designed to permit outlet pressures within their full range. Pressure adjustment beyond this range is also possible because the knob is not a limiting device. This is a common characteristic of most industrial regulators, and limiting devices may be obtained only by special design.

For best performance, regulated pressure should always be set by increasing the pressure up to the desired setting.



WARNING

**Product rupture can cause serious injury.
Do not connect regulator to bottled gas.
Do not exceed maximum primary pressure rating.**